



# Build 7.1.411 – 1765\_0000

## Software Release Notes

Revision: 1.0

Last Updated: December 9<sup>th</sup>, 2019

## Copyright © Volanté Systems 2019.

All rights reserved. No part of this publication may be reproduced, distributed, or transmitted in any form or by any means, including photocopying, recording, or other electronic or mechanical methods without the prior written permission of Volanté Systems.

## Contact Us

If you require assistance, or have any questions, please contact us any time. Our customer support team is available 24 hours a day, 7 days a week.



**Phone**

1.877.490.6333

416.988.6333



**Email**

[support@volantesystems.com](mailto:support@volantesystems.com)



**Mail**

49 Coldwater Road

Toronto ON M3B 1Y8

Canada

# Table of Contents

<b>Build 1765_0000</b> .....	<b>4</b>
Summary.....	4
<b>New Features</b> .....	<b>5</b>
InterfaceLink – Auto Clock out Cashiers Weekly .....	5
Directors Reports – Inclining Balance Plan Lines.....	5
Meal Plan Allowance Changes Report.....	6
Combos or Discounts with Value Thresholds.....	6
Combo on Total Functionality for Kiosks .....	7
iGift Card Panel for Blackboard Integration .....	7
Zebra MP7000 Weigh Scale Scanner Integration.....	8
Tracrite Integration.....	8
Standsheet Management.....	8
"Transfer To" in Inventory Management .....	8
<b>Improvements</b> .....	<b>9</b>
Error Prompts on Terminals without Cash Drawers .....	9
TM-T20ii Dedicated Drivers .....	9
Eigen Installer including MiraServ and Journey.....	9
Auto Gratuity on Kiosk.....	10
Schedule Config Table View – Chronological Order.....	10
<b>Bug Fixes</b> .....	<b>11</b>
Payroll Employees using Payroll Deduct without opt-in on Kiosk .....	11
Customer Transaction Details showing Meal Types and Meal Counts.....	11
Detailed Transaction listing by Payment Methods Showing Duplicate Cash Transactions.....	11
Sorting Menu Item Order on Mobile Apps.....	11
Global 86 Functionality on POS.....	12
ITC Meal Plan Integration: iGiftCard Balance on Receipt showing Balances when Offline.....	12
Taxes on Split Bills .....	12
BackOffice Loading Menu GUI.....	12
Exiting Customer Info Panel from Cashier Screen Resets to First Panel .....	12
Reports – Account Balance by Start and by End time.....	13
Switching Quick Menus Intermittently .....	13
Change in Behavior for Size Items .....	13
Table Services – Raise Priority without selecting Items Reports .....	13

# Build 1765\_0000

## Summary

Build 1765\_0000 introduces support for Tracrite, Zebra Printer-Scale hardware, TMT20ii drivers, and reintroduces the Stand Sheet Inventory Management module on POSes.

This build also includes new InterfaceLinks, iGiftCard UI adjustments, Combo/Discount calculations and updates to many transaction reports.

Additional fixes have been made for reporting, receipts, menu item behavior in BackOffice, and UI fixes for both POS and BackOffice.

# New Features

## InterfaceLink – Auto Clock out Cashiers Weekly

A new InterfaceLink for automatically clocking out Cashiers or Users at a particular time each week is now available.

```
AUTOCLOCKOUTWEEKLY:<day of week>:<min of day>
```

This InterfaceLink can also be combined with other Auto Clock Out parameters.

## Directors Reports – Inclining Balance Plan Lines

Directors Reports now includes lines for **Inclining Balance Plan** under **ITEM AND OTHER DISCOUNTS**.

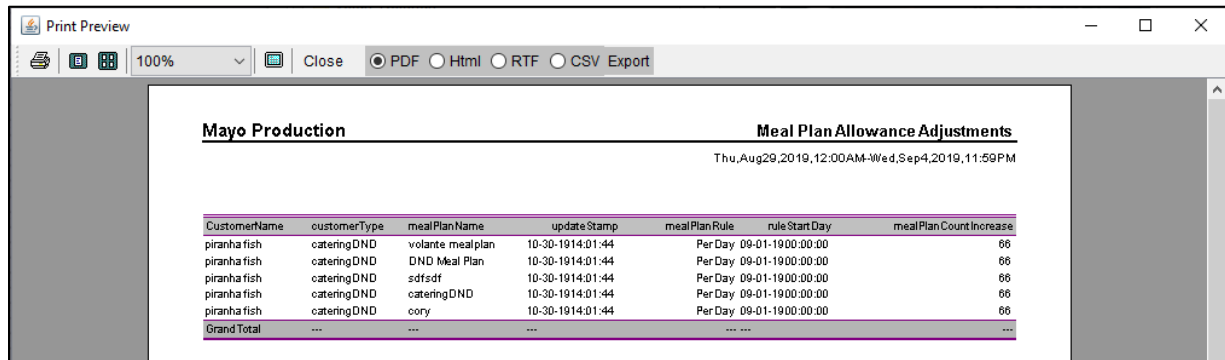
***ITEMANDOTHERDISCOUNTS***	
IncliningBalancePlan	1510.96
\$10Voucher	9.32
\$5Voucher	492.96
Chaplin_Purchase	10.78
Marketing_Purchase	32.43
MorrisoFoods	1296.57
<b>TOTALNONCASHRECEIPTS</b>	<b>3353.02</b>

# Meal Plan Allowance Changes Report

The Meal Plan Allowance Changes Report is now available. This report allows site staff to review Meal Plan updates/changes that have been done through the GUI.

The Reports will show Customer, Account Name, Customer Type, Meal Plan, Updated Date, Rule, Rule Date, and Quantity increase amounts.

The Reports can also narrow down the time frame of changes based on time constraint filters.



The screenshot shows a 'Print Preview' window with a toolbar at the top containing icons for print, zoom (set to 100%), and close, along with radio buttons for PDF, HTML, RTF, CSV, and Export. The report content is titled 'Mayo Production' and 'Meal Plan Allowance Adjustments' with a date range of 'Thu, Aug 29, 2019, 12:00AM - Wed, Sep 4, 2019, 11:59PM'. Below the title is a table with the following data:

CustomerName	customerType	mealPlanName	updateStamp	mealPlanRule	ruleStartDay	mealPlanCountIncrease
piranha fish	cateringDND	volante mealplan	10-30-1914:01:44	Per Day	09-01-1900:00:00	66
piranha fish	cateringDND	DND Meal Plan	10-30-1914:01:44	Per Day	09-01-1900:00:00	66
piranha fish	cateringDND	sdfsf	10-30-1914:01:44	Per Day	09-01-1900:00:00	66
piranha fish	cateringDND	cateringDND	10-30-1914:01:44	Per Day	09-01-1900:00:00	66
piranha fish	cateringDND	cory	10-30-1914:01:44	Per Day	09-01-1900:00:00	66
Grand Total	---	---	---	---	---	---

# Combos or Discounts with Value Thresholds

Added the ability to provide combo discounts on items if a transaction exceeds a certain price threshold.

### Example:

- This month, a brownie costs \$2.50 regularly, but if more than \$5.00 is spent on the transaction, the brownie is discounted to \$1.
- A customer orders a burger that is \$9.00, and a brownie for \$2.50.
- Because the brownie is discounted to \$1.00, the total transaction is \$10.00 (\$9.00 + \$1.00).
- The price mod will have Max applies per item set to 1.

## Combo on Total Functionality for Kiosks

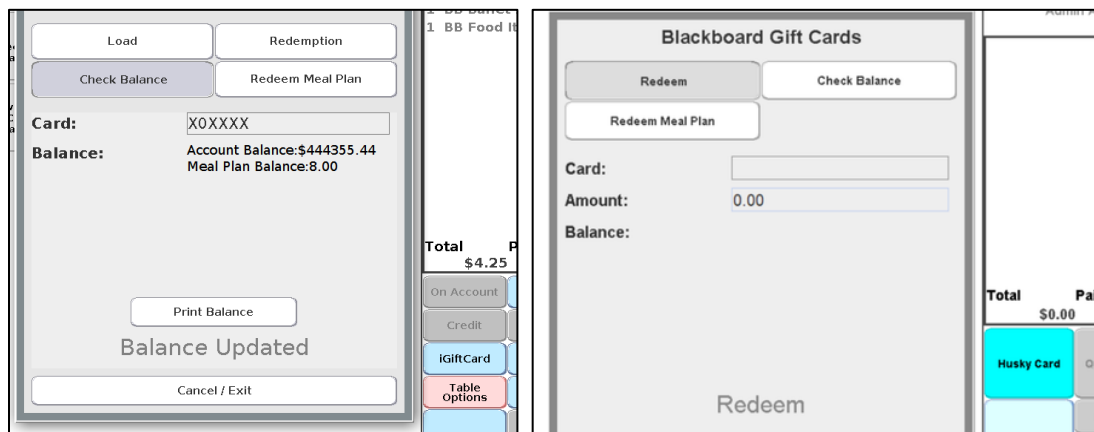
Added the ability for kiosks to combo on Total.

- Previously, no Total button was available, and only Combo on add (addition of items) was supported.
- When "Go To Payment" is selected upon choosing a combo, the total on the screen where the payment method is selected.
- When you click on Go To Payment then the combo will kick in, you will see the total on the screen where you select your payment method.

## iGift Card Panel for Blackboard Integration

If a site uses Blackboard Integration as its iGiftCard, the POS's iGiftcard panel will feature only Redeem, Check Balance, and Redeem Meal Plan options.

Other sites will continue to use the default button layout, featuring **Load/Redemption/Check Balance/Redeem Meal Plan** options.



*Standard (left) VS Blackboard layout (right)*

## Zebra MP7000 Weigh Scale Scanner Integration

Integration with Zebra MP7000 Weigh Scale Scanner is now available with Volante.

**Integration and hardware guide:** [https://www.zebra.com/content/dam/zebra\\_new\\_ia/en-us/manuals/barcode-scanners/mp7x00-ig-en.pdf](https://www.zebra.com/content/dam/zebra_new_ia/en-us/manuals/barcode-scanners/mp7x00-ig-en.pdf)

## Tracrite Integration

Tracrite integration is now available in newer builds of Volante (i.e. "New Menu"), with previous queries having been ported over to accomplish the same functionality.

## Standsheet Management

Standsheet Management has been reintroduced in Build 1765. This feature allows sites to track and manage inventory of items via detailed listings on the POS.

Stand Sheets are accessible via Admin Options > Stand Sheet Management.

Stand Sheet Management can be added to the POS's Main Menu screen (i.e. below Cashier or Bartender options). This is done in the BackOffice via **Hardware > POS Use Mode**, and checking off **Select Stand Sheets**.

## "Transfer To" in Inventory Management

In Inventory Management, a new Transfer To screen is available. This allows sites to transfer inventory from one inventory group to another.

It is accessed through the Inventory Grouping Management Screen.

To open the **Inventory Transfer** screen on the POS, open the Admin Panel and select Inventory Grouping Management. Select an Inventory Group, and click Transfer To.

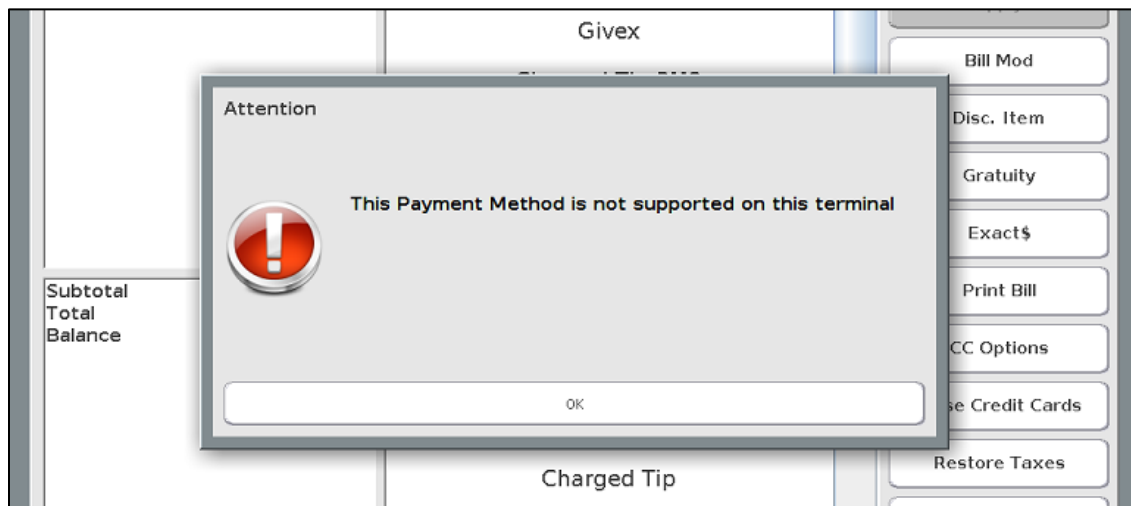


# Improvements

## Error Prompts on Terminals without Cash Drawers

If terminals are not configured with Cash Drawers, attempting to use Cash Drawer functions on POS will prompt a message, which by default will state, "This Payment Method is not supported on this terminal".

- This line can be edited in the Volante Resource properties file.
- Previously, terminals without Cash Drawers attempting to use these functions would result in terminals freezing, requiring a restart.



## TM-T20ii Dedicated Drivers

Volante now supports integration with the TM-T20ii Printer Driver.

## Eigen Installer including MiraServ and Journey

The Eigen Installer now prompts for Miraserv or Journey installation during setup.

## Auto Gratuity on Kiosk

Volante Kiosks now support Auto Gratuity and Gratuity being displayed. Previously, these values would only appear on specific screens and receipts.

Auto gratuity display on Kiosk is now triggered by a setting, "Auto gratuity for any check balance over X", where auto gratuity applies when X is a value greater than 0.

## Schedule Config Table View – Chronological Order

The Schedule Configuration table view now shows configurations in chronological order, based on their Start Date.

- The Date has been reformatted to allow it to be sorted both chronologically and alphabetically.
- The default width for the table columns have been expanded to accommodate extra white space resulting from this change (i.e. date now uses numbers and not letters).
- Schedules now default to sorting based on the Start Time period.
- The system now remembers the last sort order.

# Bug Fixes

## Payroll Employees using Payroll Deduct without opt-in on Kiosk

Fixed issue where users were capable of accessing Payroll Deduct accounts even with Opt-In status disabled.

- If the InterfaceLink "OPT\_IN\_REQUIRED" is enabled, it will require employees to opt-in on the AMS portal before they are allowed to use Payroll Deduct.
- A new error message is displayed when users attempt to use Payroll without opting in.

## Customer Transaction Details showing Meal Types and Meal Counts

Fixed issue where Customer Transaction Details failed to show Meal Type for Customer, as well as Meal Counts remaining.

## Detailed Transaction listing by Payment Methods Showing Duplicate Cash Transactions

Fixed issue with Detailed Transaction listing by Payment Method Report displaying cash transactions twice.

## Sorting Menu Item Order on Mobile Apps

Fixed issue where editable Order IDs in the BackOffice lead to Menu Item sorting following the Order IDs, resulting in disorganized menu item order on Mobile Apps (i.e. no logical order, not alphabetical)

Results will now appear sorted regardless of Order ID edits, based off expected patterns.

## Global 86 Functionality on POS

Fixed issues with Global 86 functionality where searching items to perform actions only work if the exact case and the full name of the item is used.

Searching is now case agnostic and is capable of pulling partial searches.

## ITC Meal Plan Integration: iGiftCard Balance on Receipt showing Balances when Offline

Fixed issues with ITC Meal Plan Integration where iGiftCard balances were showing "Offline" in place of actual balances on receipts.

## Taxes on Split Bills

Fixed issue where Taxes were not appearing on Split Bills.

## BackOffice Loading Menu GUI

Fixed issues where sorting menu items caused BackOffices to be unable to load menu elements (i.e. Groupings, Menu Sets)

## Exiting Customer Info Panel from Cashier Screen Resets to First Panel

Fixed issues where opening the Customer Info panel (Customer button) and selecting a tab, then exiting the panel does not reset the Cashier screen to the first panel, and stays on the previous tab.

## Reports – Account Balance by Start and by End time

Fixed issue where reports would indicate discrepancy between Account Balance Start and End Times.

- The Start Time value will no longer be displayed, as only the End Time is required.
- "Gift Card Report by Start Time" will no longer be available as the Start Time field is unnecessary.
- As **Report By Start Time** reports are no longer available, the corresponding Reports Folder has been renamed from "**By Start/End Time**" to simply "**By End Time**".

## Switching Quick Menus Intermittently

Fixed issue where using the Switch Menu button would occasionally throw errors.

## Change in Behavior for Size Items

Fixed issue where Main Menu item itself was appearing as a Size within the "Choose a Size" option screen on both POSes and Kiosks. This occurred due to the "Default" option being necessary as one of the sizes.

This was adjusted so that the "Default" option could be removed from the Size Selection Screen.

## Table Services – Raise Priority without selecting Items Reports

Fixed issue where selecting a Table in Table Service and raising the priority without selecting an item would prompt errors.