



# Software Release Notes

**Build 7.1.408 – 1756\_0000**

1.877.490.6333 | 416.988.6333  
support@volantesystems.com

<b>Date</b>	Oct 23 <sup>rd</sup> , 2018
-------------	-----------------------------

## Copyrights © Volanté POS Systems 2018

All rights reserved. No part of this publication may be reproduced, distributed, or transmitted in any form or by any means, including photocopying, recording, or other electronic or mechanical methods, without the prior written permission of Volanté POS Systems – Innovative Hospitality & Restaurant POS.

## Questions for Volanté? Contact us

Volanté offers 24-7 help desk support and leverages a variety of tools and processes to track problem logs, change requests and other client requirements. If the troubleshooting steps in this document have not resolved your issue, please contact the following:



**Support line:** 1-877-490-6333  
416-988-6333



**Support email:** [support@volantesystems.com](mailto:support@volantesystems.com)

# Table of Contents

---

<b>OVERVIEW</b> .....	<b>1</b>
Summary.....	1
Important highlights from this release .....	1
<b>NEW FEATURES</b> .....	<b>2</b>
Eigen Integration.....	2
Tax by Ounce/Unit .....	2
<b>IMPROVEMENTS</b> .....	<b>3</b>
Table Service – Seat View – Scroll Bars for Seat Items .....	3
Time Filters – Custom Hours or Days .....	4
Menu Search Filters – Search by Menu Item Name, PLU, External Ref ID, Scan Code .....	4
BackOffice Menu Setup – Combo Scheduling Confirmation .....	4
Swagman Reports – Customer Payments Reports now recognize iGiftCard transactions as Credit Card transactions.....	4
Combo – Saving Set Schedules.....	5
Combo Schedule summary panel needed.....	5
Kiosk - Image Heap .....	6
Kiosk - Pay at Counter Prompt.....	6
Pay at Counter Only Mode .....	6
KIOSK config exit button should prompt to save changes.....	6
CUSTOMPRICE Option Interface Link Bug.....	6
<b>BUG FIXES</b> .....	<b>7</b>
Menu Setup.....	7
Menu Categories.....	7
Option Item Quantities.....	7
Table Merging.....	7
Search Functions.....	7
Quick Menu .....	7
Menu Set Scheduling.....	7
Refresh Button sets menu items to be redownloadable.....	8
Grouping Selection.....	8
Scancodes – Minimum Length Requirement Prompts .....	8

Hardware Configuration.....	8
Printer Types and Routing.....	8
HeadOffice.....	8
HeadOffice Discounts sending send Tag Types down to BackOffice.....	8
Web Service Setup is the same for all stores.....	8
POS and Kiosk.....	9
Deleted Price Levels on POS Home Screen.....	9
Discounts only applying once per transaction.....	9
Customer Auto Discounts.....	9
Table Service.....	9
Merging and Table Graphics.....	9
Table Sets and Pictures are sharing between stores.....	9
Exports and Reports.....	10
Sales Export Files Containing MMIs in the Menu Item Export File.....	10
Paid In/Out Breakdown and Reports Failing to Display Information.....	10
General Setup.....	10
Receipt Footer Logos.....	10

## Overview

### Summary

Build 1756\_0000 of Volanté now supports integration with Eigen Credit Cards, and adds the ability to perform Absolute Tax calculations on Menu Items by weight-unit quantities.

Numerous improvements have also been made for existing features, including the addition of Custom\_Price interfaceLink for POSes, Tables, Menu Filters, Swagman Report updates, Combo Schedule functions, Image Configuration fixes, and many new prompts in the Menu Setup module.

Bug fixes have also been outlined at the end of this document.

### Important highlights from this release

1. Eigen Integration
2. Tax by Ounce/Unit
3. Table Service Improvements
4. Combo Scheduling Updates
5. Kiosk Improvements

## New Features

### Eigen Integration

Volanté POS now features integration with Eigen Credit Cards.

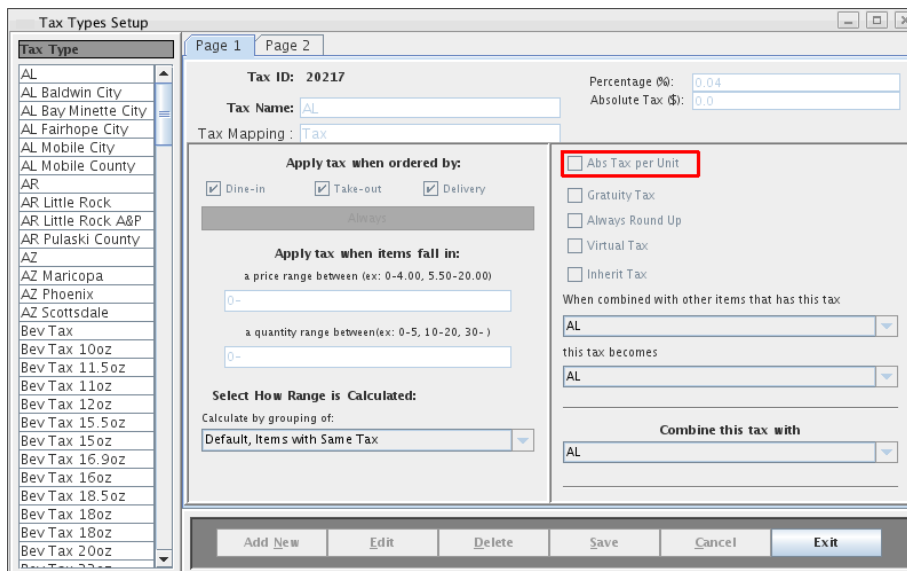
- Eigen is a P2PE credit/debit solution for Compass sites.
- Semi-integrated serial solution
- Ensures payment terminals are connected with retail point-of-sale software, while maintaining separation between payment information transmission and other systems.

**Official site for Eigen:** <https://www.eigenpayments.com/services/gift>

### Tax by Ounce/Unit

**Module:** Tax Types Setup screen; allow for Tax calculations by ounce per unit

These functions are enabled via the "UNITS TAX" checkbox in Tax Types Setup, on the right pane. This enables tax on the **number of units** of an item present.



For example, a site may be set up with pop that is 16 oz. You would set the menu item up to be 16 "Units". When applying this tax to the item, the tax will then charge the **Absolute** amount, multiplied by the number of units present.

Please note the following when using this calculation:

- Percentage (%) Tax amounts will not work for this tax type; ONLY Absolute Tax will be enabled.
- The system will also disable the 'Combine this tax with' setting when Unit tax is enabled.

# Improvements

## Table Service – Seat View – Scroll Bars for Seat Items

A scroll bar is now available for each Seat in the Seat View, under the Tables module.

This allows users to scroll up and down the Menu Listing for each seat, allowing users to view longer lists of Menu Items ordered at each seat.

Previously, users would be unable to view more than 10 ordered items in each Seat View pane.

More Options		Move Items	Split Item	Group Seats	Select All	Previous Page	Regular Menu	Quantity	Find Item	Zoom									
Re-size Display		Add Seat	Cash Out All	Done	Next Page	Hold/Fire	Size	Add Note	Remove										
						Bin W. TBL-11,[S10]													
						Seat 10 <span style="float: right;">Fri, Oct 12, 04:36PM</span>													
1 B 1 A 1 A 1 A 1 A 1 B		1 CCCCCC 1 B	2	1 CCCCCC 1 CCCCCC 1 CCCCCC 1 B 1 B 1 CCCCCC															
1 B	5	1 A 1 CCCCCC 		1 B 															
	9				1 CCCCCC 1 CCCCCC 1 B 1 A 1 A 1 A														
						<table border="1"> <tr> <td><b>Total</b></td> <td><b>Paid</b></td> <td><b>Balance</b></td> </tr> <tr> <td></td> <td>\$0.00</td> <td>\$0.00</td> </tr> <tr> <td></td> <td></td> <td><b>\$0.00</b></td> </tr> </table>					<b>Total</b>	<b>Paid</b>	<b>Balance</b>		\$0.00	\$0.00			<b>\$0.00</b>
<b>Total</b>	<b>Paid</b>	<b>Balance</b>																	
	\$0.00	\$0.00																	
		<b>\$0.00</b>																	
		Cash	Debit	Close\$															
		Credit	Payment																
		Add Seat	Next Seat	course 1															
		SplitBill View	Bill Mods	Heads: 1															
		Export current seat to table	Table Options	Exit															
		PrintBill	More Options																

## Time Filters – Custom Hours or Days

Menu Item Time Filters have been updated to allow users to choose the time interval (hours or days), and the corresponding number of hours or days, instead of only 2-hour, 12-hour and 24-hour history periods.

## Menu Search Filters – Search by Menu Item Name, PLU, External Ref ID, Scan Code

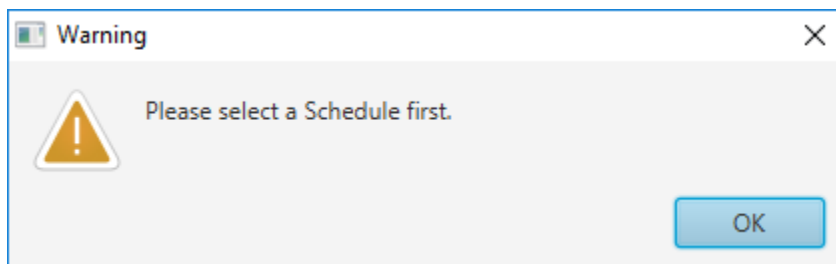
Menu Search filters now allow users to search by Menu Item Name, PLU value, External Reference IDs or Scan Codes.

This was to keep it consistent in the Main Menu listing.

## BackOffice Menu Setup – Combo Scheduling Confirmation

In the BackOffice Menu Setup module, users are now prompted to select a schedule before attempting to add any date rules.

When no schedules have been selected, and users attempt to add a rule, a warning dialog box will appear to indicate a schedule has not been selected yet.



## Swagman Reports – Customer Payments Reports now recognize iGiftCard transactions as Credit Card transactions

Updated Swagman Reports so that "Customer Payments" Reports now list iGiftCard transactions as Credit Card transactions.

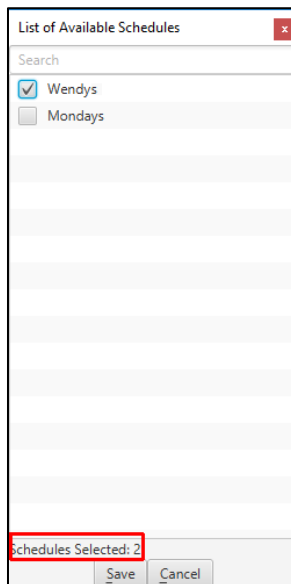
- The report generates the query indicated in **Report.sql**. The report that is generated is indicated in **actualResult.csv**.
- Previously, there were no ways to identify and distinguish between iGiftCard and Credit Card Payments.
- The report will output information similar to **expectedResult.csv**, which can differentiate genuine credit card transactions from iGiftCard transactions.



## Combo – Saving Set Schedules

General improvements have been made for saving Combo Schedules:

- When saving Combo Schedules, users are now prompted if no schedule has been selected to assign the combo to.
- A label at the bottom of the Set Schedules dialog now indicates the number of Schedules that have been selected.



## Combo Schedule summary panel needed

Combo Schedule summaries are now available in the Menu Setup module.

- A summary panel now exists to show the user how many rules they have created for this schedule. From this list, users can then choose to delete/edit the existing rules. This allows users to keep track of what rules have been recently created.

Specific changes made to Schedules:

- Removed *Config Schedules* function. Replaced with other features.
- Add Schedules Tab
- Add Config and Items sub tabs
- Add Summary Panel to config tab
- Add features to Items tab

## Kiosk - Image Heap

Fixed issues where Menu Item Images were overrunning the heap when added to the order too quickly.

In other words, this effectively caused bugs with value counts if Menu Items were being ordered quickly.

## Kiosk - Pay at Counter Prompt

On the kiosk, when users have selected Pay-at-Counter mode for payment, a prompt now directs the user to pay at the counter to pay on the Order Complete screen.

## Pay at Counter Only Mode

A "**Pay-At-Counter-Only**" mode has also been added for sites that do not have plans on using payment processing methods.

## Kiosk Configuration – Deleting Kiosk Configuration Schemes

Under the Kiosk Config menu, users will now be asked to confirm deletion of a Configuration Scheme, instead of immediately deleting the configuration without a prompt.

## KIOSK config exit button should prompt to save changes

Attempting to exit the Configuration Scheme without saving changes now prompts users to confirm saving before committing.

## CUSTOMPRICE Option Interface Link Bug

The CUSTOM\_PRICE Option InterfaceLink now applies to options for both POS and Kiosk.

This link will overwrite existing price levels with a specific price for a specified menu item.

The InterfaceLink format is as follows:

- `Custom_Price:menuitemid=price,menuitemid=price`

Previously, this feature was only available for Kiosks.

### **Confluence KB documentation:**

<http://volantedocs.com/confluence/display/VSD/InterfaceLink+-+Menu+Items>

## Bug Fixes

### Menu Setup

#### Menu Categories

---

In the BackOffice, fields for Printers, Taxes and Discounts assigned based on the first item in the Category will now auto-fill for newly created items.

I.e. New Items created in downloaded category inherits settings of the first Item downloaded till refreshed or restarted.

#### Option Item Quantities

---

Fixed issues with option item quantity logic, where adding and deducting the quantity of option items to the order would sometimes multiply option item counts.

Also fixed issues where attempting to press the option deduction button would fail to decrease counts properly.

#### Table Merging

---

Fixed issues where moving merged tables to new tabs would not unmerge the table. Moving tables to new tabs guarantees that they are no longer merged.

Normally, when merged table transactions are paid for and closed, the tables are unmerged. This was not the case when moving the tables to other tabs, and was inconsistent.

#### Search Functions

---

Fixed issues with multi-selection functions, where using these features on the Menu Item Tree, if attempting to search for another item, items that were already checked off will become hidden and actually deselect ("uncheck") the item. This was caused by changes to behavior for the MenuViewTreetItem to make multi-selection work for Grouping items.

#### Quick Menu

---

Fixed issues with Quick Menu Entries where copying previously deleted items and pasting the item again would lead to the deleted item appearing. Deleted items will no longer be pasted.

#### Menu Set Scheduling

---

Fixed issues where kiosks with Menu Rotations configured via scheduling would display **blank** Menu Sets upon launch. Previously, a Data Sync had to be done to resolve the issue, but this proved cumbersome when this had to be done each time a kiosk was restarted.

## [Refresh Button sets menu items to be redownloadable](#)

---

Fixed issues where pressing refresh would make items appear as though they are considered downloadable. This was only a visual bug and did not affect full functionality.

## [Grouping Selection](#)

---

**Module:** BackOffice/HeadOffice > Menu Setup > Options/Combos > Option Groupings Multi-Selection

Fixed issues where items checked off using multi-selection on Menu Groupings would become unchecked after scrolling down and back up again.

## [Scancodes – Minimum Length Requirement Prompts](#)

---

Added prompts to indicate Scancodes must be longer than 3 characters long before allowing it to be added.

# Hardware Configuration

## [Printer Types and Routing](#)

---

Fixed issues with downloading HeadOffice Printer Types to the local store, where downloaded printer types would not be available via Printer Routing (via Terminal Setup → Printer Routing)

Printer types are no longer configured from under General Setup > Stores.

# HeadOffice

## [HeadOffice Discounts sending send Tag Types down to BackOffice](#)

---

Fixed issues where Price Modifier Discount Links would not work for template store Price Modifiers.

The price modifier discount links don't work for template price modifiers.

Where a discount is created at main store and then synced down to BO the discount gets to the BO but the item types do not get to the HO.

## [Web Service Setup is the same for all stores](#)

---

Fixed issues in HeadOffice where WebService Setup values were appearing the same for all stores; each store will have unique, individual values.

## POS and Kiosk

### Deleted Price Levels on POS Home Screen

---

Fixed issues where names of Price Levels that were previously deleted would still appear on the POS Home Screen.

### Discounts only applying once per transaction

---

Fixed issues where discounts were only applying once per transaction.

### Customer Auto Discounts

---

Fixed issues where cashiers swiping cards and totaling to receive employee discounts were not being applied properly.

Issues arose when the discounts applied only to when the items are added to the transaction first before swiping.

## Table Service

### Merging and Table Graphics

---

Fixed issues where moving merged tables to existing tabs would not refresh table graphics.

### Table Sets and Pictures are sharing between stores

---

Table graphics now specific to each store; each store will only be able to edit their own graphics.

Changed logic for loading images for Table Sets; table graphics will now only load for the store that they were intended for.

Non-template stores cannot edit sets, nor can they edit images belonging to another store.

## Exports and Reports

### Sales Export Files Containing MMIs in the Menu Item Export File

Fixed issues where Morrison Daily Menu Item Exports and Sales Export files did not exist in the Menu Item Export File. MMIs can now be found in the Sales Export Files, and items being sold are more readily accessible.

### Paid In/Out Breakdown and Reports Failing to Display Information

A patch was created for sites on Build 1715, fixing an issue where Paid In/Out Reports displayed values of \$0.

## General Setup

### Receipt Footer Logos

Fixed issues where footer logos were not displaying on receipts.

**NOTE:** Receipt footer logos will only display if:

- There are no header logos already present
- The header logo and receipt logo are the same