

## QSR Kitchen Video Bracket Configurations and Instructions

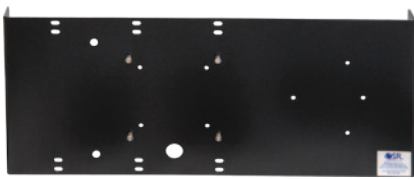
The QSR kitchen video bracketing options can be assembled to fit your specific kitchen environment needs.

A variety of mounting solution configurations is available, which drives the particular combination you will purchase. Refer to page two for an overview of the options available to you.

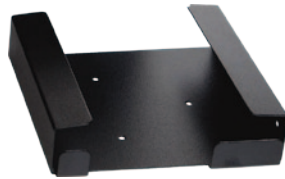
Additionally, directions for assembling several of the more common configurations are detailed in this document.

The use of third party mounting equipment is also required for installation of your choice of the QSR bracketing assemblies. The QSR bracketing assembly options are attached to a variety of ceiling, wall, and shelf mounts - which are available from third party companies. Please ensure you have all parts necessary for your specific mounting solution, including any third party mounting equipment needed to complete your installation.

### Inventory Options:



1



2



3



4



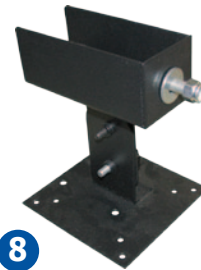
5



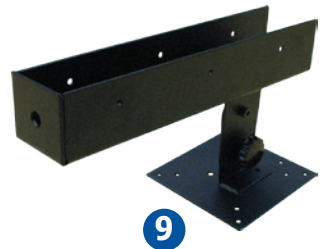
6



7

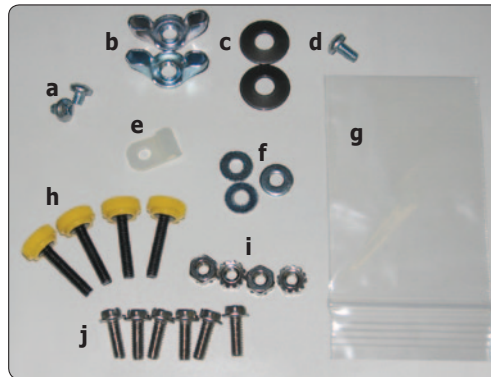


8



9

1. 003-7006 QSR Adapter Plate (Standard)
2. 003-7002 QSR Controller Pocket
3. 003-7013 QSR Onyx Controller Pocket
4. 003-7003 QSR Controller Power Brick Pocket
5. 003-7005 QSR Keypad Bracket (includes keypad retaining bar)
6. 003-7004 QSR Keypad Support Arm
7. 003-7014 QSR Back Protector
8. 003-7015 QSR Pole Mount Adapter
9. 003-7016 QSR Compact Pole Mount Adapter
10. 003-7008 QSR Bracket Hardware Bag
11. 003-7017 QSR Bracket Mini Hardware Bag



10

- a. 8/32 x 3/16 Screws (2)
- b. 1/4" Thread Wing Nuts (2)
- c. 1/4" Washers (2)
- d. 8/32 x 5/16 Screw (1)
- e. 1/8" Cable Clamp (1)
- f. #8 SAE Flat Washers (3)
- g. Bracket Parts Bag (1)
- h. Thumb Screws (4)
- i. 8/32 KEPS Nuts (4)
- j. 8/32 x .500" Hex Screws (6)



11

- g. Bracket Parts Bag (1)
- h. Thumb Screws (4)
- i. 8/32 KEPS Nuts (4)
- j. 8/32 x .500" Hex Screws (4)

With a variety of options available, please consider the following information when ordering your QSR kitchen video bracketing solution.

## Mounting Hardware

The QSR Bracket Hardware Bag (10) comes standard when ordering any complete kit from QSR. For those installations mounting the keypad separate from the monitor or for those installations using a touch monitor, QSR offers kits without the keypad support arm and keypad bracket. The QSR Bracket Mini Hardware Bag (11) comes standard with each of the kits that do not include the keypad support arm and keypad bracket. Neither hardware bag is shipped when ordering the bracket components separately instead of ordering a kit; therefore the correct hardware bag must be ordered separately.

## Monitors

Most LCD monitors, including those offered for sale by QSR, use the QSR Adapter Plate (Standard). QSR also offers a version of the adapter plate with PEM standoffs for use with certain monitors: 003-7001 QSR Adapter Plate (PEM). Please note the following key information related to your monitor choice.

- When using ELO touch monitors, we recommend using the QSR Adapter Plate (PEM) instead of using the QSR Adapter Plate (Standard).
- When using Dell monitors – or other monitors with recessed backs – we recommend using the QSR Adapter Plate (PEM).

## Additional Product Code and Kits

Please refer below for the product codes, as well as a list of kits to ease your ordering process.

### Product Codes:

003-7006	QSR Adapter Plate (Standard)
003-7002	QSR Controller Pocket
003-7013	QSR Onyx Controller Pocket
003-7003	QSR Controller Power Brick Pocket
003-7005	QSR Keypad Bracket ( <i>includes keypad retaining bar</i> )
003-7004	QSR Keypad Support Arm
003-7014	QSR Back Protector
003-7015	QSR Pole Mount Adapter
003-7016	QSR Compact Pole Mount Adapter
003-7008	QSR Bracket Hardware Bag
003-7017	QSR Bracket Mini Hardware Bag
003-7001	QSR Adapter Plate (PEM)

### Kits:

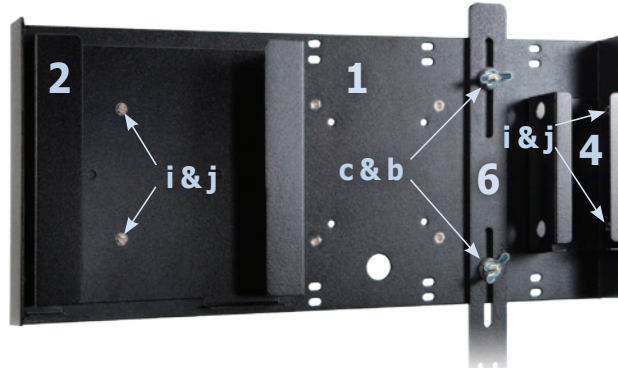
003-7007	QSR Kitchen Video Bracket Complete Kit – includes: Adapter Plate (Standard), Controller Pocket, Power Brick Pocket, Keypad Support Arm, Keypad Bracket, Hardware Bag
003-7027	QSR Kitchen Video Bracket Kit – includes: Adapter Plate (Standard), Controller Pocket, Power Brick Pocket, Mini Hardware Bag
003-7026	QSR Kitchen Video Bracket Complete Kit for Onyx – includes: Adapter Plate (Standard), Onyx Pocket, Power Brick Pocket, Keypad Support Arm, Keypad Bracket, Hardware Bag
003-7025	QSR Kitchen Video Bracket Kit for Onyx – includes: Adapter Plate (Standard), Onyx Pocket, Power Brick Pocket, Mini Hardware Bag
003-7000	QSR Kitchen Video Bracket Complete Kit – includes: Adapter Plate (PEM), Controller Pocket, Power Brick Pocket, Keypad Support Arm, Keypad Bracket, Hardware Bag
003-7022	QSR Kitchen Video Bracket Kit – includes: Adapter Plate (PEM), Controller Pocket, Power Brick Pocket, Mini Hardware Bag
003-7021	QSR Kitchen Video Bracket Complete Kit for Onyx – includes: Adapter Plate (PEM), Onyx Pocket, Power Brick Pocket, Keypad Support Arm, Keypad Bracket, Hardware Bag
003-7020	QSR Kitchen Video Bracket Kit for Onyx – includes: Adapter Plate (PEM), Onyx Pocket, Power Brick Pocket, Mini Hardware Bag

## QSR Kitchen Video Bracket - Complete Assembly Instructions

**i** The following parts will be required for complete assembly: **1 2 4 5 6 10**

\*Note: Additional bracketing will be required to mount this assembly to a pole or a wall. See below in this document for adding QSR's Pole Mount Adapter.

- STEP 1** Position the adapter plate (1) so that it lies flat on the work surface. Attach the keypad support arm (6) using 1/4" thread wing nuts (b) and two washers (c). Secure the controller pocket (2), open end facing upward, with two 8/32 KEPS nuts (i) and two 8/32 x .500" hex screws (j). Next, attach the controller power brick pocket (4), open end facing upward, using two 8/32 KEPS nuts (i) and two 8/32 x .500" hex screws (j).



\*Note: Adapter plate with PEM standoffs (003-7001) also available for use with monitors with a recessed back such as Dell monitors. In this configuration, substitute the adapter plate shown with 003-7001.

- STEP 2** Turn the entire assembly around and attach the keypad bracket (5) to the front of the keypad support arm (6) using two 8/32 x .500" hex screws (j), where the 8/32 KEPS nuts (i) in the back of the support arm will serve as the nuts for securing the hex screws. Attach the keypad retaining bar, included in the bracket hardware bag (10), onto the keypad bracket (5) using two 8/32 x 3/16 screws (a) and two #8 flat washers (f). Take a 8/32 x 5/16 screw (d) and attach cable tie clip (e) to the opening on the keypad bracket (5).

\*Note: The cable tie clip (e) will need to be removed during later installation to allow keypad cable to run through this opening.



- STEP 3** Secure monitor to front of adapter plate using four thumb screws (h).

- STEP 4** **Assembly is complete.** The QSR bracket is now ready to be mounted to your ceiling, wall, or shelf mount and used in your hospitality environment.



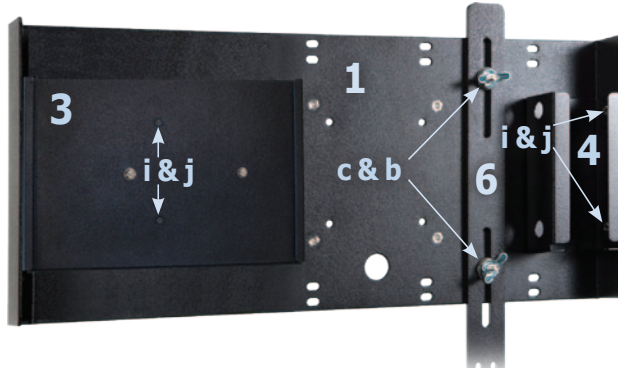


## QSR Kitchen Video Bracket (for Onyx controller) - Complete Assembly Instructions

**i** The following parts will be required for complete assembly: **1 3 4 5 6 10**

\*Note: Additional bracketing will be required to mount this assembly to a pole or a wall. See below in this document for adding QSR's Pole Mount Adapter.

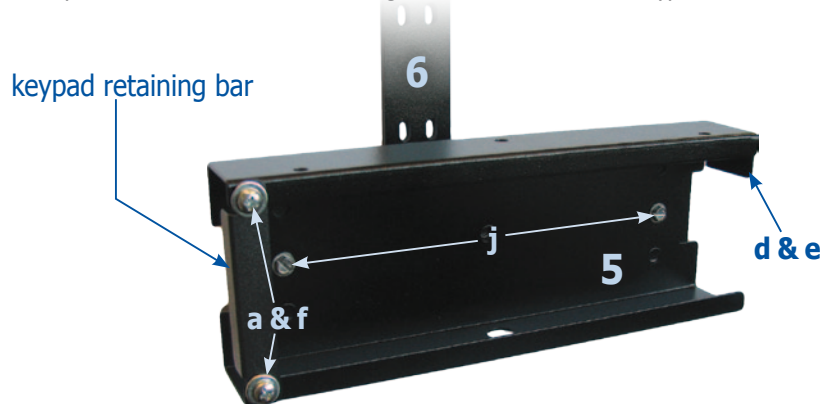
- STEP 1** Position the adapter plate (1) so that it lies flat on the work surface. Attach the keypad support arm (6) using 1/4" thread wing nuts (b) and two washers (c). Secure the controller pocket (3), open end facing upward, with two 8/32 KEPS nuts (i) and two 8/32 x .500" hex screws (j). Next, attach the controller power brick pocket (4), open end facing upward, using two 8/32 KEPS nuts (i) and two 8/32 x .500" hex screws (j).



\*Note: Adapter plate with PEM standoffs (003-7001) also available for use with monitors with a recessed back such as Dell monitors. In this configuration, substitute the adapter plate shown with 003-7001.

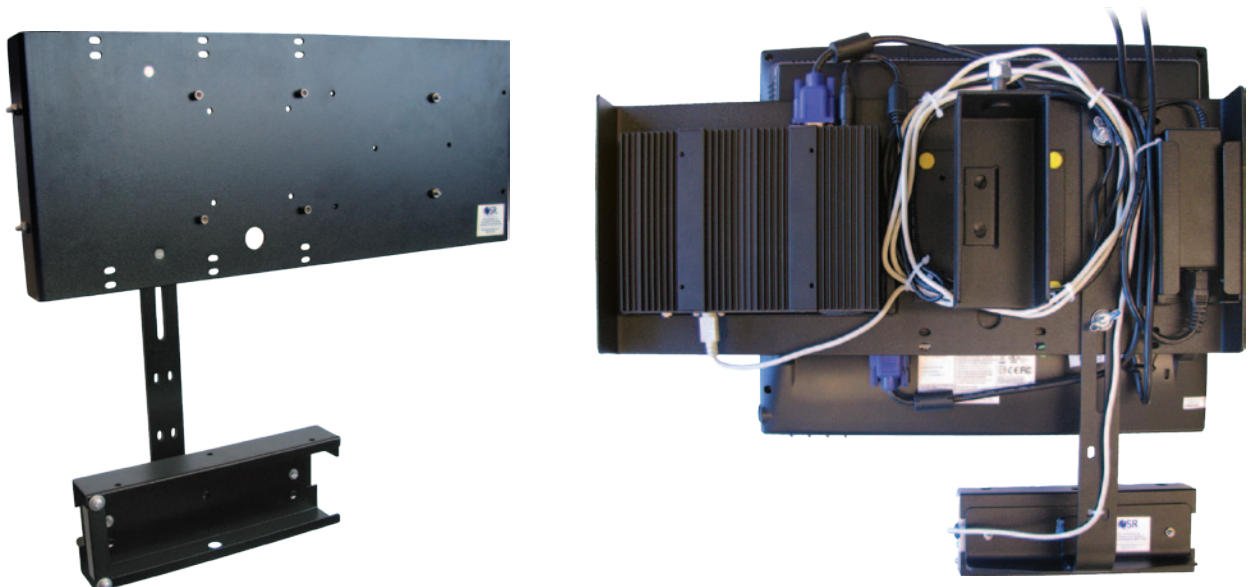
- STEP 2** Turn the entire assembly around and attach the keypad bracket (5) to the front of the keypad support arm (6) using two 8/32 x .500" hex screws (j), where the 8/32 KEPS nuts (i) in the back of the support arm will serve as the nuts for securing the hex screws. Attach the keypad retaining bar, included in the bracket hardware bag (10), onto the keypad bracket (5) using two 8/32 x 3/16 screws (a) and two #8 flat washers (f). Take a 8/32 x 5/16 screw (d) and attach cable tie clip (e) to the opening on the keypad bracket (5).

\*Note: The cable tie clip (e) will need to be removed during later installation to allow keypad cable to run through this opening.



- STEP 3** Secure monitor to front of adapter plate using four thumb screws (h).

- STEP 4** **Assembly is complete.** The QSR bracket is now ready to be mounted to your ceiling, wall, or shelf mount and used in your hospitality environment.



## QSR Kitchen Video Bracket - Assembly Instructions with Back Protector

**i** The following additional parts will be required for complete assembly: **7**

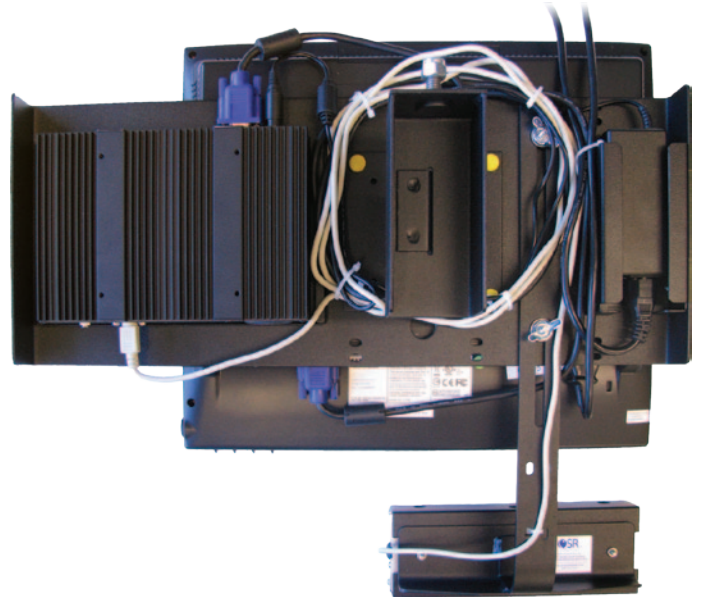
*\*Note: Additional bracketing will be required to mount this assembly to a pole or a wall. See below in this document for adding QSR's Pole Mount Adapter.*

**STEP 1** Once your assembly is completed per previous instructions, it will appear as follows.



*\*Note: Above picture represents Kit 003-7007. Kit 003-7000 uses the adapter plate with PEM standoffs.*

*\*\*Note: The back protector can also be used with Kits 003-7027 and 003-7022. These kits are used with a touch monitor when the keypad is mounted separately, as they do not contain the keypad support arm or keypad bracket.*



*\*Note: Above picture represents Kit 003-7026. Kit 003-7021 uses the adapter plate with PEM standoffs.*

*\*\*Note: The back protector can also be used with Kits 003-7025 and 003-7020. These kits are used with a touch monitor when the keypad is mounted separately, as they do not contain the keypad support arm or keypad bracket.*

**STEP 2** For additional containment and protection of parts and cabling, attach the QSR Back Protector (7) to a QSR kitchen video bracket kit. The Back Protector clips directly onto the adapter plate (1). Once the Back Protector is clipped into place, secure the entire assembly with two 8/32 KEPS nuts (i) and two 8/32 x .500" hex screws (j).

**The QSR bracket is now ready to be mounted to your ceiling, wall or shelf mount.**



## QSR Pole Mount Adapter Instructions

The QSR Pole Mount Adapter is used for stores that do not have a threaded stud into which a QSR bracket assembly can slide and be secured with a washer and nut. For this purpose, the pole mount adapter has a built-in stud for the proper suspension of the entire bracket assembly.

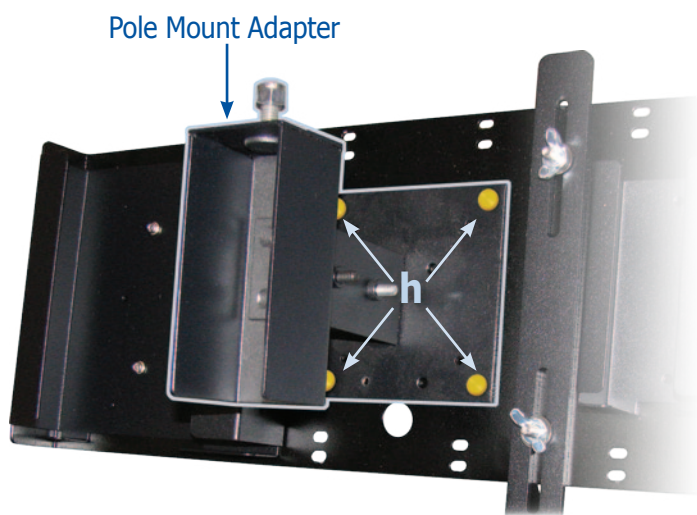
**i** The following parts will be required for complete assembly: **1** **2** or **3** **4** **5** **6** **8** **10**

**STEP 1** Assemble a QSR bracket assembly using an adapter plate, and follow the instructions provided previously in this document.

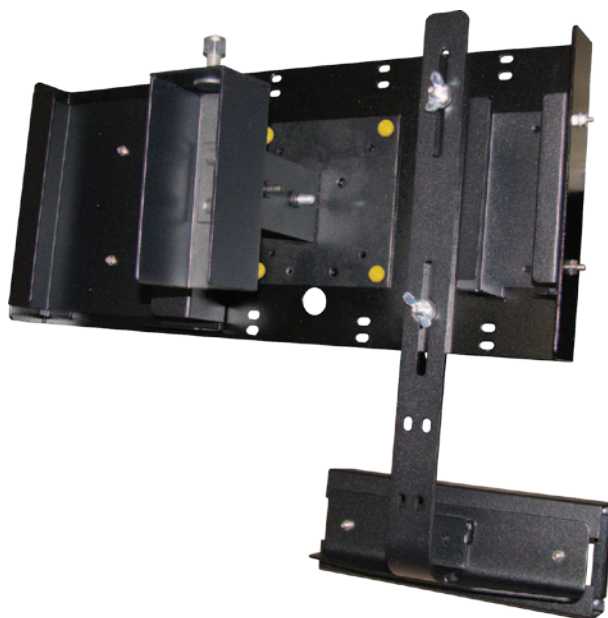
**STEP 2** Place the QSR bracket assembly flat upon your work surface, with the side housing the controller pocket (2 or 3) and controller power brick pocket (4) facing upward.

**STEP 3** Attach the Pole Mount Adapter (8) to the adapter plate (1). Utilize the VESA mounting available between the controller pocket (2 or 3) and keypad support arm (6) to secure the Pole Mount Adapter (8) to the adapter plate (1) with four thumb screws (h).

Orient the Pole Mount Adapter (8) according to how the assembly will eventually be suspended.



**STEP 4** **Assembly is complete.** The QSR bracket assembly with the QSR Pole Mount Adapter is now ready to be added to the pole mount in your hospitality environment.



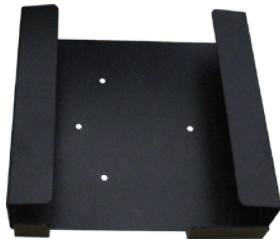


## QSR Compact Pole Mount Adapter Instructions

The QSR Compact Pole Mount Adapter can be used for stores that prefer to mount a monitor with the controller pocket (2) and the controller power brick pocket (4), but not the keypad bracket (5). Note that when using the QSR Compact Pole Mount Adapter, the **keypad bracket (5) must be mounted separately**.

**i** The following parts will be required for complete assembly: **2 4 9 11**

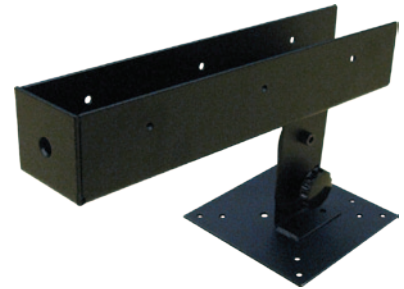
**STEP 1** The controller pocket (2) and controller power brick pocket (4) must both be properly secured on the QSR Compact Pole Mount Adapter (9) with 8/32 KEPS nuts (i) and 8/32 x .500" hex screws (j).



Controller Pocket (2)



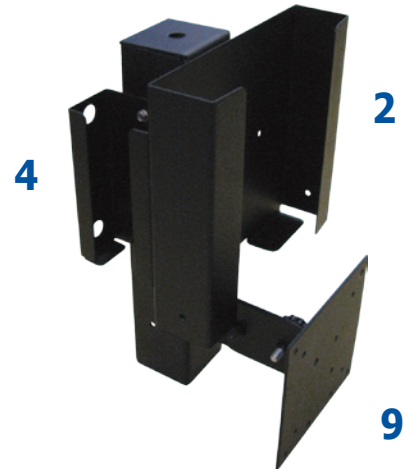
Controller Power Brick Pocket (4)



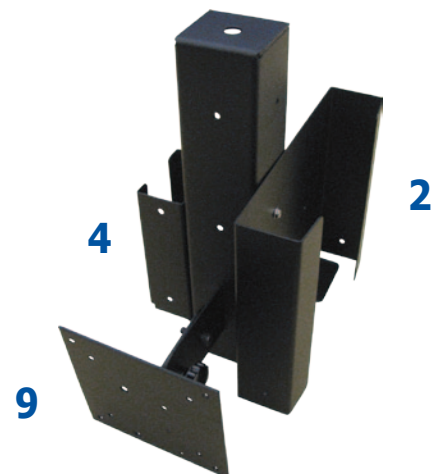
QSR Compact Pole Mount Adapter (9)

**Two of the most common configurations are shown below.**

**STEP 2a** If the controller pocket (2) is mounted on the same side as the VESA mount portion of the QSR Compact Pole Mount Adapter (9), then the controller power brick pocket (4) must be installed on the side. The controller pocket (2) will face the same direction as the VESA mount, with the flanges at the bottom. The controller power brick pocket (4) face will be perpendicular to the controller pocket (2), with the flanges at the bottom



**STEP 2b** The controller pocket (2) can also be attached to the side of the QSR Compact Pole Mount Adapter (9), facing away from the VESA mount. The controller power brick pocket (4) should be mounted on the opposite side. Remember that both pockets must be assembled with the flanges on the bottom.



**Assembly is complete.** The QSR bracket assembly using the QSR Compact Pole Mount Adapter is now ready to be added to the pole mount in your hospitality environment.